
CLASSICS AT UK UNIVERSITIES, 2016-17

Statistics

This year, we have the highest number of full-time permanent staff since 2011-12 and the lowest number of part-time temporary staff in the last ten years. More significantly, in addition to the usual data on staff numbers, we asked institutions this year for a breakdown of staff by gender according to their grade, contract type and role. The results show clearly that men outnumber women at every grade except for Associate Lecturer, with the most significant disparity at professorial level, where 65.7% of our professoriate are male. When looking at contract types, there are fewer women on temporary and permanent contracts than men, but more on zero hours contracts. We do not, however, see a significant disparity between the number of men and women in teaching and research, teaching only, or research only roles. The collation of this data coincides with the publication of a new CUCD Protocol on Academic Staffing (<https://cucd.blogs.sas.ac.uk/policydocuments/>), following a report by Katherine McDonald in this year's Bulletin on Employment and Casualisation in Classics Department.

At undergraduate level, we have seen a decline in the number of students taking 'Traditional Classics' (Classics, Greek, Latin) as a Single Honours subject, representing the biggest fall in numbers since 2009-10. This has, however, coincided with a dramatic increase of 70.8% in the numbers taking 'Traditional Classics' as a Joint Honours subject. The numbers for beginners' Latin and Greek have increased at both undergraduate and postgraduate level, with numbers for Latin in particular looking much healthier and returning to levels similar to those of 2013-14, following the Open University's relaunch of Latin in 2016.

The overall numbers for 'Modern Classics' (Classical Studies, Ancient History, Classical Art and Archaeology) remain broadly steady, but again show an increase in the number of Joint Honours students. The figures for Classical Art and Archaeology in particular show a sharp fall in the number of Single Honours students but – like 'Traditional Classics' – a corresponding rise in the number of Joint Honours students, which means that the overall full-time equivalent figure remains almost unchanged. Ancient History continues to grow in popularity as both a Single Honours and subsidiary subject, meaning that, for the first time in the history of CUCD statistics, the total number of students studying Ancient History at undergraduate level has surpassed 4,000.

The number of both full-time and part-time postgraduate students has fluctuated only slightly over the past few years and it is reassuring to see that, after a slight dip in 2015-16, taught postgraduate figures seem to have recovered in 2016-17.

Finally, I would like to offer my sincere thanks to those academic and administrative colleagues in institutions across the UK who put so much time and effort into compiling their returns, especially as I have written to you asking for more data than ever. Your continued support for both the CUCD and for the subject nationally is enormously appreciated.

Sharon Marshall (Sharon.Marshall@exeter.ac.uk)

Contributing Institutions

Birkbeck	Manchester
Birmingham	Manchester Met.
Bristol	Newcastle
Cambridge	Nottingham
Cardiff	The Open University
Durham	Oxford
Edinburgh	Queen's University Belfast
Exeter	Reading
Glasgow	Roehampton
KCL	Royal Holloway
Kent	St. Andrews
Lancaster	Swansea
Leeds	Trinity Saint David
Leicester	UCL
Liverpool	Warwick
Lincoln	Winchester

For four institutions, data from a previous return have been re-used.

Table A: Overview

	Honours students (SH + JH)				All students (incl. Other)							
	no.	FTE	% <i>change</i> <i>FTE</i>	<i>index</i> <i>(1992–</i> <i>3 =</i> <i>100)</i>	<i>excluding OU</i>				<i>including OU</i>			
					no.	FTE	% <i>change</i> <i>FTE</i>	<i>index</i> <i>(1992–</i> <i>3 =</i> <i>100)</i>	no.	FTE	% <i>change</i> <i>FTE</i>	<i>index</i> <i>(1997–</i> <i>8 =</i> <i>100)</i>
2007-8	6,812	5,044	3.4	146	9,851	5,672	1.3	115	16,183	6,831	2.0	109
2008-9	6,922	5,163	2.4	150	9,980	5,808	2.4	118	16,334	6,864	0.5	110
2009-10	6,500	5,149	-0.3	149	9,456	5,791	-0.3	118	12,070	7,716	12.4	123
2010-11	6,465	5,164	0.3	150	10,530	5,817	0.5	118	14,028	7,566	-1.9	121
2011-12	7,247	5,385	4.3	156	9,916	5,825	0.1	118	12,628	7,855	3.8	126
2012-13	6,785	5,450	1.2	158	8,545	5,675	-2.6	115	10,921	7,527	-4.2	120
2013-14	7,450	5,418	-0.6	157	9,009	5,777	1.8	117	11,203	7,521	-0.1	120
2014-15	7,373	5,542	2.3	161	8,799	5,875	1.7	119	10,795	6,956	-7.5	111
2015-16	7,349	5,538	-0.1	161	9,253	6,022	2.5	122	11,248	7,023	1.0	112
2016-17	6,964	5606	1.2	163	9,123	6,169	2.4	125	11,309	7,263	3.4	116

Table B: Single and Joint Honours

	'Traditional classics' (Classics, Greek, Latin)								'Modern classics' (Class. Studs, Anc. Hist., Art/Arch.)							
	single honours				joint honours				single honours				joint honours			
	no.	FTE	% change FTE	index (‘92–3 = 100)	no.	FTE	% change FTE	index (‘92–3 = 100)	no.	FTE	% change FTE	index (‘92–3 = 100)	no.	FTE	% change FTE	index (‘92–3 = 100)
	trad SH			trad JH				mod SH				mod JH				
2007-8	1,773	1,440	10.3	119	296	163	77.2	106	2,924	2,506	-2.7	170	1,819	935	3.3	154
2008-9	1,958	1,600	11.1	132	289	164	0.6	107	2,822	2,488	-0.7	169	1,853	911	2.6	150
2009-10	1,399	1,271	-20.6	105	252	124	-24.4	81	2,989	2,824	13.5	192	1,860	929	2.0	152
2010-11	1,437	1,276	0.4	105	254	136	9.7	88	2,961	2,832	0.3	192	1,813	920	-1.0	151
2011-12	1,754	1,376	7.8	114	314	112	-17.6	73	3,388	3,008	6.2	204	1,791	889	-3.4	146
2012-13	1,600	1,433	4.1	118	261	132	17.9	86	3,195	2,915	-3.1	198	1,729	970	9.1	159
2013-14	2,081	1,572	9.7	130	271	145	9.8	94	3,397	2,810	-3.6	191	1,701	891	-8.1	146
2014-15	2,063	1,571	0.1	130	206	103	-29.0	67	3,406	3,050	8.5	207	1,698	818	-8.2	134
2015-16	2,048	1,566	-0.3	129	204	106	2.9	69	3,463	3,060	0.3	208	1,635	805	-1.6	132
2016-17	1,682	1,521	-2.9	126	291	181	70.8	118	3,352	3,064	0.1	208	1,639	840	4.3	138

**TABLE C.1:
ALL STUDENTS**

	'Traditional classics'					
	Classics		Greek		Latin	
	No.	FTE	No.	FTE	No.	FTE
SINGLE HONOURS						
2012-13	1,497	1,358	40	27	63	48
2013-14	1,780	1,444	107	46	194	82
2014-15	1,788	1,453	101	46	174	72
2015-16	1,780	1,446	102	48	166	73
2016-17	1,567	1,431	58	40	57	50
JOINT HONOURS						
2012-13	144	72	23	12	94	48
2013-14	164	85	25	12	82	48
2014-15	98	56	22	10	86	38
2015-16	110	62	21	10	73	34
2016-17	185	118	31	19	75	43
OTHER						
2012-13	204	35	191	89	589	245
2013-14	58	32	199	175	580	248
2014-15	104	30	189	89	224	92
2015-16	104	29	149	67	124	33
2016-17	142	44	146	64	376	148
ALL						
2012-13	1,845	1,465	254	128	746	341
2013-14	2,002	1,561	331	233	856	378
2014-15	1,990	1,539	312	145	484	202
2015-16	1,994	1,537	272	125	363	140
2016-17	1,894	1,593	235	123	508	241

Figures in italics include Open University data.

**TABLE C.2:
ALL STUDENTS**

	'Modern classics'					
	Class. Civ./Studs		Anc. Hist.		Class. Art/Arch.	
	No.	FTE	No.	FTE	No.	FTE
SINGLE HONOURS						
<i>2012-13</i>	1,565	1,376	1,594	1,519	36	20
<i>2013-14</i>	1,423	1,224	1,749	1,535	225	52
<i>2014-15</i>	1,422	1,343	1,726	1,639	258	68
<i>2015-16</i>	1,395	1,319	1,814	1,675	254	66
<i>2016-17</i>	1,365	1,287	1,907	1,722	80	55
JOINT HONOURS						
<i>2012-13</i>	582	294	1,031	599	115	77
<i>2013-14</i>	655	289	1,055	561	91	41
<i>2014-15</i>	564	266	1027	504	107	48
<i>2015-16</i>	563	264	996	497	77	45
<i>2016-17</i>	557	268	977	510	105	62
OTHER						
<i>2012-13</i>	1,887	1,471	717	169	549	237
<i>2013-14</i>	1,570	1,239	625	146	621	262
<i>2014-15</i>	1,870	849	562	141	473	211
<i>2015-16</i>	1,750	703	1,099	399	269	52
<i>2016-17</i>	1,693	690	1,334	462	250	47
ALL						
<i>2012-13</i>	4,034	3,141	3,342	2,118	700	334
<i>2013-14</i>	3,648	2,752	3,429	2,242	937	355
<i>2014-15</i>	3,856	2,459	3,315	2,284	838	327
<i>2015-16</i>	3,708	2,286	3,909	2,571	600	163
<i>2016-17</i>	3,615	2,245	4,218	2,694	435	164

Figures in *italics* include OU data.

TABLE D.1: STAFF

	Full-time				Part-time				Other	
	permanent		temporary		permanent		temporary		no.	FTE
	no.	FTE	no.	FTE	no.	FTE	no.	FTE		
<i>2007-8</i>	394	390	33	34	30	14	72	27	124	36
<i>2008-9</i>	401	398	33	34	29	16	87	32	125	31
<i>2009-10</i>	369	369	45	45	26	12	92	39	155	33
<i>2010-11</i>	380	377	36	24	26	12	106	44	161	44
<i>2011-12</i>	399	389	40	38	28	13	71	24	135	55
<i>2012-13</i>	392	389	41	39	22	11	80	20	114	50
<i>2013-14</i>	395	388	41	40	22	10	56	17	68	60
<i>2014-15</i>	397	386	49	47	30	14	64	23	172	82
<i>2015-16</i>	382	374	50	48	28	16	52	10	183	90
<i>2016-17</i>	399	395	59	57	31	19	40	14	170	87

Summary (all staff)

	no.	FTE	% <i>change</i>	on leave (FTE)	effective FTE	% <i>change</i>
<i>2012-13</i>	650	509	-1.9	67	442	1.8
<i>2013-14</i>	656	515	1.2	47	468	5.9
<i>2014-15</i>	795	552	7.2	76	476	1.7
<i>2015-16</i>	695	547	-0.9	78	469	-1.5
<i>2016-17</i>	699	572	4.6	68	504	7.5

D.2: STAFF BY GRADE

	Male	no. Female	Other gender identity	Male	% Female	Other gender identity
ASSOC. LECTURER <i>2016-17</i>	20	27	0	42.6	57.4	0
LECTURER <i>2016-17</i>	71	53	0	57.3	42.7	0
SENIOR LECTURER <i>2016-17</i>	32	29	0	52.5	47.5	0
READER <i>2016-17</i>	18	17	0	51.4	48.6	0
PROFESSOR <i>2016-17</i>	44	23	0	65.7	34.3	0

Figures included in this tables are from the following 20 institutions: Birkbeck, Birmingham, Cardiff, Durham, Edinburgh, Exeter, Kent, Lancaster, Leicester, Manchester, Manchester Metropolitan, Newcastle, Reading, Roehampton, Royal Holloway, St Andrews, Trinity St David, UCL, Warwick, Winchester.

D.3: STAFF BY CONTRACT TYPE

	no.			%		
	Male	Female	Other gender identity	Male	Female	Other gender identity
FIXED TERM/ TEMPORARY <i>2016-17</i>	39	32	0	54.9	45.1	0
PERMANENT <i>2016-17</i>	134	106	0	55.8	44.2	0
ZERO HOURS <i>2016-17</i>	9	14	0	39.1	60.9	0

D.4: STAFF BY ROLE

	no.			%		
	Male	Female	Other gender identity	Male	Female	Other gender identity
RESEARCH AND TEACHING <i>2016-17</i>	135	103	0	56.7	43.3	0
TEACHING ONLY <i>2016-17</i>	29	30	0	49.2	50.8	0
RESEARCH ONLY <i>2016-17</i>	18	19	0	48.6	51.4	0

Figures included in these tables are from the following 20 institutions: Birkbeck, Birmingham, Cardiff, Durham, Edinburgh, Exeter, Kent, Lancaster, Leicester, Manchester, Manchester Metropolitan, Newcastle, Reading, Roehampton, Royal Holloway, St Andrews, Trinity St David, UCL, Warwick, Winchester.

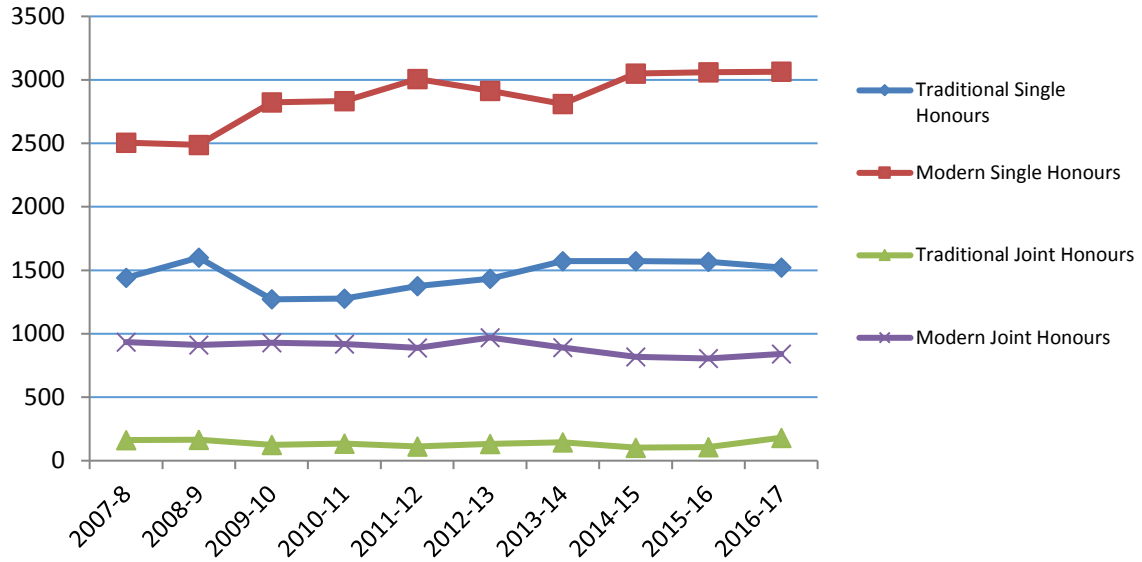
**TABLE E: BEGINNERS'
LANGUAGES**

	Greek			Latin		
	no.	FTE	<i>% change</i>	no.	FTE	<i>% change</i>
Undergraduates						
<i>2012-13</i>	800	446	<i>95.6</i>	1,100	468	<i>17.8</i>
<i>2013-14</i>	723	303	<i>-32.1</i>	1,020	398	<i>-14.9</i>
<i>2014-15</i>	729	298	<i>-1.7</i>	768	224	<i>-43.7</i>
<i>2015-16</i>	762	279	<i>-6.4</i>	740	222	<i>-0.9</i>
<i>2016-17</i>	660	308	<i>10.4</i>	935	404	<i>82</i>
Postgraduates						
<i>2012-13</i>	93	41	<i>28.1</i>	165	79	<i>83.7</i>
<i>2013-14</i>	114	22	<i>-46.3</i>	149	29	<i>-63.3</i>
<i>2014-15</i>	124	37	<i>68.2</i>	162	39	<i>34.5</i>
<i>2015-16</i>	99	36	<i>-2.7</i>	118	37	<i>-5.1</i>
<i>2016-17</i>	97	43	<i>19.4</i>	156	65	<i>75.7</i>

TABLE F: POSTGRADUATES

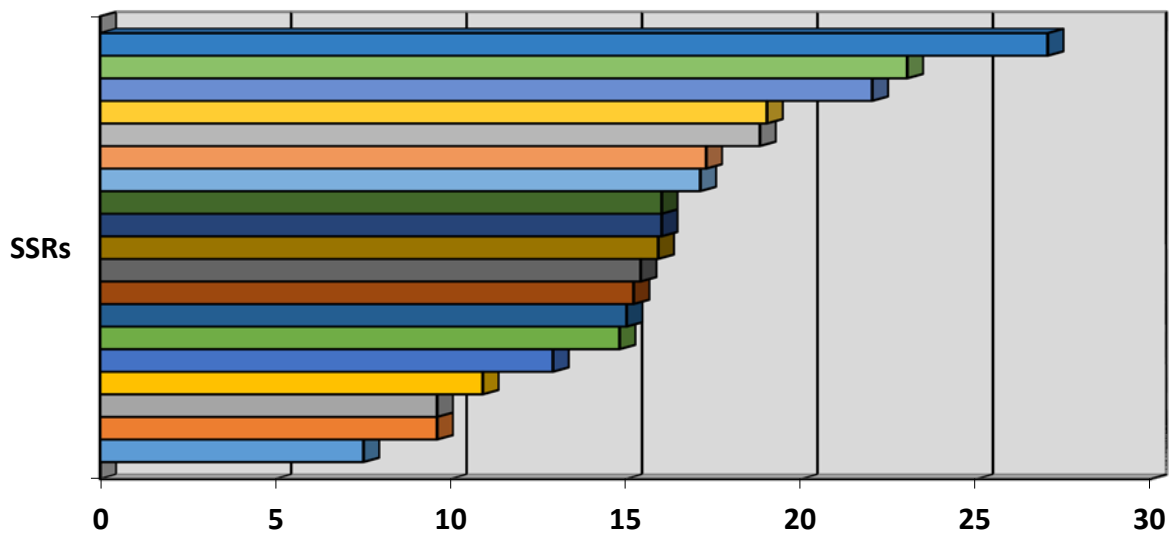
	Full-time	Part-time	Other (FTE = 0)	Total no.	FTE	% change
TAUGHT						
2012-13	328	189	1	519	432	-16.6
2013-14	405	227	6	633	484	12.0
2014-15	399	226	10	635	475	-1.9
2015-16	347	243	8	598	467	-1.7
2016-17	389	234	2	625	504	7.9
RESEARCH						
2012-13	507	139	20	666	575	10.6
2013-14	552	143	17	695	599	4.2
2014-15	566	164	25	755	625	4.3
2015-16	535	131	24	690	578	-7.5
2016-17	547	116	15	678	580	0.3

FTE Student Numbers in the UK
 'Traditional' vs. 'Modern' Classics, Single and Joint Honours
 10-year view (2007-17)



Staff-Student Ratios
 2016-17*

The average SSR is 1:15.9. The highest SSR is 1:27; the lowest SSR is 1:7.5.



*figures included in this graph are from the following 19 departments: Birmingham, Cambridge, Cardiff, Durham, Exeter, Glasgow, KCL, Kent, Liverpool, Manchester, Newcastle, Nottingham, Oxford, Reading, Royal Holloway, St Andrews, Trinity St David, UCL, Warwick.