

Classicists at UK Universities

2013-14 Statistics

This year's statistics report includes the staff and student figures of a small number of 'new' departments that are offering teaching in classical subjects without formally constituting a 'Classics' department: the family is growing! And the same holds true overall also for the number of students studying for one or other classical subject anywhere in the UK: with 7,450 single and joint honours students, the highest number of students ever has enjoyed being taught in one or other of the 31 departments listed below. And the OU, on other hand, is as always responsible for teaching the single largest number of students in classical subjects anywhere in the UK!

This year's statistics continue also with the recording of the staff-student ratios as calculated by departments or institutions. There is a trend this year towards a greater clustering into 3 to 4 main categories - with the central two 'clusters' hovering around 1:15-1:17 and 1:22-1:23 respectively. It is too early to say if this is just a freak in this year's returns, or whether the changing academic landscape is producing a more stratified study landscape as regards the staff-student ratio.

As always, this report would not have been possible to produce without the assistance of the many departments who have contributed to it - and the many colleagues, academic and administrative, who have compiled the relevant data. Very many thanks, then, for continuing to support CUCD - and with this the classical community - by contributing to the compilation of the departmental staff and student figures.

Ulrike Roth, University of Edinburgh

CONTRIBUTING DEPARTMENTS

Birkbeck	Leeds
Birmingham	Manchester
Bristol	Manchester Met.
Cambridge	Newcastle
Cardiff	Nottingham
Durham	Oxford
Edinburgh	Reading
Exeter	Roehampton
Glasgow	Royal Holloway
KCL	St. Andrews
Kent	Swansea
Lampeter	UCL
Lancaster	Warwick
Leeds	Winchester
Leicester	
Lincoln	and the OU.
Liverpool	

Table A : Overview

	Honours students (SH + JH)				All students (incl. Other)			
	no.	FTE	% change FTE (1992-3 = 100)	index (1992-3 = 100)	no.	FTE	% change FTE	index (1997-8 = 100)
					excluding OU			
					including OU			
2004-5	5,834	4,571	1.0	119	8,366	5,220	1.8	98
2005-6	6,186	4,868	6.5	141	8,937	5,500	5.4	112
2006-7	6,258	4,878	0.2	142	9,296	5,600	1.8	114
2007-8	6,812	5,044	3.6	146	9,851	5,672	3.1	115
2008-9	6,922	5,163	6.1	150	9,980	5,808	5.6	118
2009-10	6,500	5,149	-0.3	149	9,456	5,791	-0.3	118
2010-11	6,465	5,164	0.3	150	10,530	5,817	0.5	118
2011-12	7,247	5,385	4.3	156	9,916	5,825	0.1	118
2012-13	6,785	5,450	1.2	158	8,545	5,675	-2.6	115
2013-14	7,450	5,418	-0.6	157	9,009	5,777	1.8	117
					11,203	7,521	-0.07	120

Table B: Single and Joint Honours

**'Traditional classics'
(Classics, Greek, Latin)**

**'Modern classics'
(Class. Studs, Anc. Hist., Art/Arch.)**

	single honours				joint honours				single honours				joint honours			
	no.	FTE	% change FTE ('92-3 = 100)	index ('92-3 = 100)	no.	FTE	% change FTE ('92-3 = 100)	index ('92-3 = 100)	no.	FTE	% change FTE ('92-3 = 100)	index ('92-3 = 100)	no.	FTE	% change FTE ('92-3 = 100)	index ('92-3 = 100)
		trad SH				trad JH				mod SH				mod JH		
2004-5	1,482	1,225	6.5	97	232	114	-9.4	82	2,518	2,424	2.6	149	1,602	809	-8.0	99
2005-6	1,624	1,300	6.2	107	200	96	-16.2	62	2,792	2,576	6.3	175	1,571	896	10.9	147
2006-7	1,616	1,306	0.4	108	187	92	-4.0	60	2,808	2,575	0.0	175	1,647	905	1.0	149
2007-8	1,773	1,440	10.8	119	296	163	70.0	106	2,924	2,506	-2.7	170	1,819	935	4.3	154
2008-9	1,958	1,600	23.0	132	289	164	71.3	107	2,822	2,488	-3.4	169	1,853	911	1.6	150
2009-10	1,399	1,271	-20.6	105	252	124	-24.4	119	2,989	2,824	13.5	192	1,860	929	2.0	153
2010-11	1,437	1,276	0.0	106	254	136	10	88	2,961	2,832	0.0	192	1,813	920	-1.0	151
2011-12	1,754	1,376	8.0	114	314	112	-18.0	73	3,388	3,008	6.0	204	1,791	889	-3.0	146
2012-13	1,600	1,433	4.1	118	261	132	17.8	85	3,195	2,915	-3.1	198	1,729	970	9.1	159
2013-14	2,081	1,572	9.6	130	271	145	9.8	94	3,397	2,810	-3.6	190	1,701	891	-8.1	146

**TABLE C.1:
ALL STUDENTS**

	'Traditional classics'					
	Classics		Greek		Latin	
	No.	FTE	No.	FTE	No.	FTE
SINGLE HONOURS						
2009-10	1,312	1,212	41	21	46	39
2010-11	1,318	1,215	40	23	79	38
2011-12	1,306	1,161	105	24	152	50
2012-13	1,497	1,358	40	27	63	48
2013-14	1,780	1,444	107	46	194	82
JOINT HONOURS						
2009-10	79	39	13	7	160	79
2010-11	110	59	17	10	127	68
2011-12	134	47	33	8	147	57
2012-13	144	72	23	12	94	48
2013-14	164	85	25	12	82	48
OTHER						
2009-10	26	11	404	98	456	160
2010-11	110	30	270	116	932	393
2011-12	184	55	223	97	743	311
2012-13	204	35	191	89	589	245
2013-14	58	32	199	175	580	248
ALL						
2009-10	1,417	1,262	448	126	662	278
2010-11	1,538	1,304	327	149	1,138	499
2011-12	1,624	1,263	361	129	1,052	418
2012-13	1,845	1,465	254	128	746	341
2013-14	2,002	1,561	331	233	856	378

Figures in italics include Open University data.

**TABLE C.2:
ALL STUDENTS**

	'Modern classics'					
	Class. Civ./Studs		Anc. Hist.		Class. Art/Arch.	
	No.	FTE	No.	FTE	No.	FTE
SINGLE HONOURS						
2009-10	1,475	1,430	1,425	1,338	89	56
2010-11	1,435	1,388	1,470	1,397	66	47
2011-12	1,641	1,457	1,672	1,500	75	51
2012-13	1,565	1,376	1,594	1,519	36	20
2013-14	1,423	1,224	1,749	1,535	225	52
JOINT HONOURS						
2009-10	572	277	1,145	574	143	78
2010-11	626	310	1,089	557	98	53
2011-12	558	268	1,131	565	102	56
2012-13	582	294	1,031	599	115	77
2013-14	655	289	1,055	561	91	41
OTHER						
2009-10	2,169	1,586	1,531	304	984	408
2010-11	2,617	1,134	1,601	311	1,029	418
2011-12	1,971	1,517	1,538	284	903	347
2012-13	1,887	1,471	717	169	549	237
2013-14	1,570	1,239	625	146	621	262
ALL						
2009-10	4,216	3,293	4,101	2,216	1,216	542
2010-11	4,678	2,832	4,160	2,247	1,193	518
2011-12	4,170	3,424	4,341	2,349	1,080	454
2012-13	4,034	3,141	3,342	2,118	700	334
2013-14	3,648	2,752	3,429	2,242	937	355

TABLE D: STAFF

	Full-time		Part-time		Other	
	permanent	temporary	permanent	temporary	no.	FTE
	no.	FTE	no.	FTE	no.	FTE
2004-5	327	324	41	41	75	35
2005-6	345	342	38	39	53	15
2006-7	370	367	34	35	73	18
2007-8	394	390	33	34	72	27
2008-9	401	398	33	34	87	32
2009-10	369	369	45	45	92	39
2010-11	380	377	36	24	106	44
2011-12	399	389	40	38	71	24
2012-13	392	389	41	39	80	20
2013-14	395	388	41	40	56	17

Summary (all staff)

	no.	FTE	% change	on leave (FTE)	effective FTE	% change
2009-10	687	498	-2.4	86	412	-7.5
2010-11	692	501	0.6	67	434	5.4
2011-12	665	517	3.2	85	434	0
2012-13	650	510	-1.4	67	443	2.1
2013-14	656	523	2.5	47	463	4.5

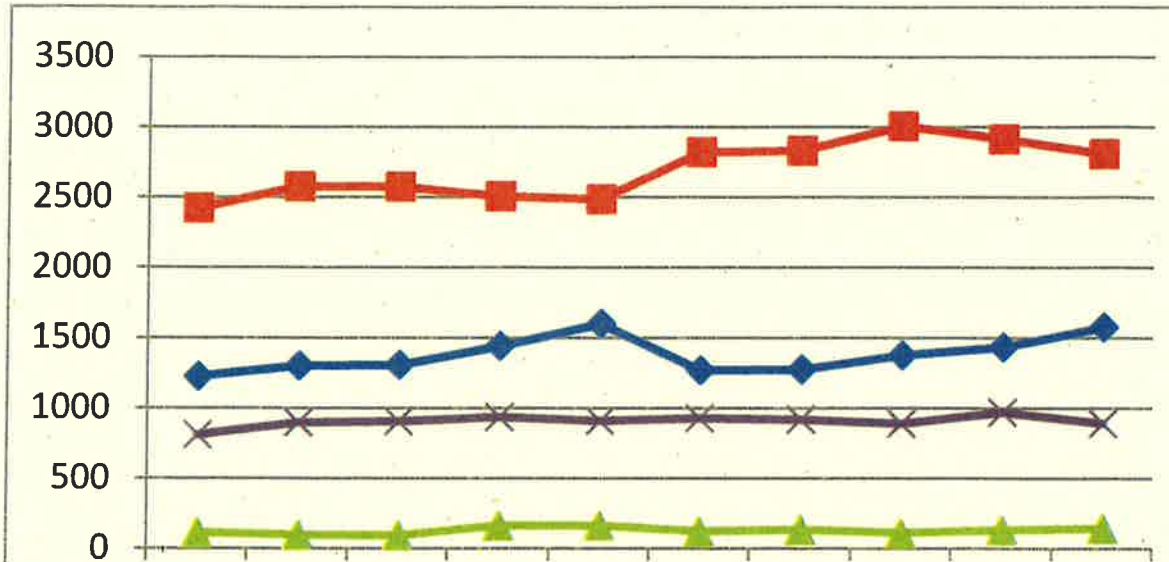
**TABLE E: BEGINNERS'
LANGUAGES**

	Greek			Latin		
	no.	FTE	% change	no.	FTE	% change
Undergraduates						
2009-10	950	288	-18.3	1,309	343	-12.3
2010-11	850	267	-7.3	1,387	454	32.0
2011-12	736	228	-14.6	1,170	397	-12.6
2012-13	800	446	95.6	1,100	468	17.8
2013-14	723	303	-32.1	1,020	398	-14.9
Postgraduates						
2009-10	78	22	5.4	130	27	-16.7
2010-11	87	19	-15.6	168	64	137.0
2011-12	119	32	68.4	123	43	-32.8
2012-13	93	41	28.1	165	79	83.7
2013-14	114	22	-46.3	149	29	-63.3

TABLE F: POSTGRADUATES

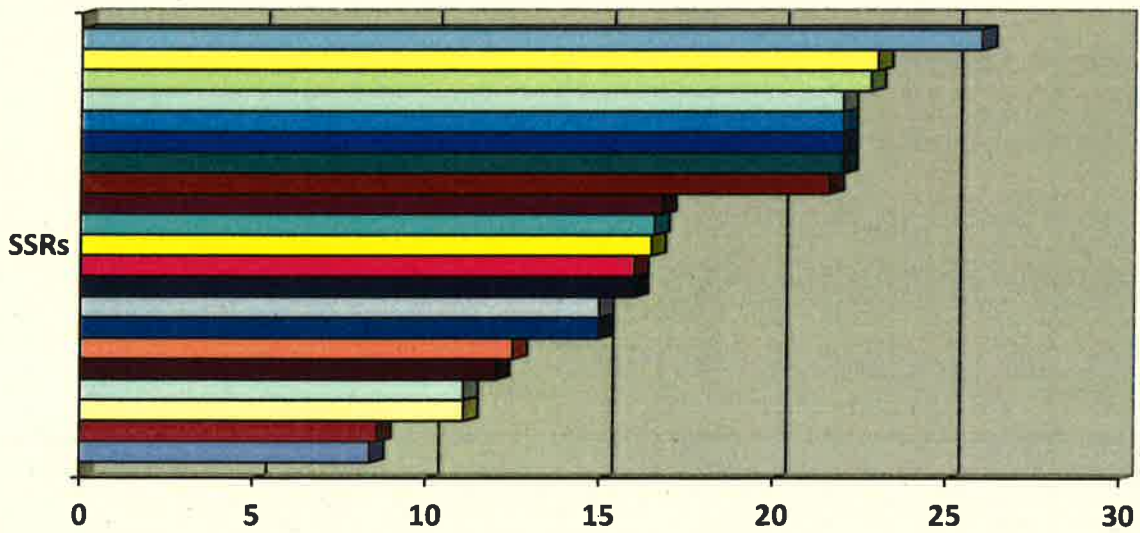
	Full-time	Part-time	Other (FTE = 0)	Total no.	FTE	% change
TAUGHT						
2009-10	389	201	14	604	491	-2.5
2010-11	405	207	5	612	469	-4.7
2011-12	452	184	3	739	518	10.4
2012-13	328	189	1	519	432	-16.6
2013-14	405	227	6	633	484	12.0
RESEARCH						
2009-10	430.5	119.5	23	573	455	9.4
2010-11	444	116	10	560	504	10.8
2011-12	455	128	0	583	520	3.2
2012-13	507	139	20	666	575	10.6
2013-14	552	143	17	695	599	4.2

FTE Student Numbers in the UK
 'Traditional' vs. 'Modern' Classics, Single and Joint Honours
 10-year-view (2004-14)



Staff-Student-Ratios
 2013-14*

The average SSR is 1:16.9. The highest SSR is 1:26; the lowest SSR is 1:8.4.



*figures included in this graph are from the following 21 departments: Bristol, Cambridge, Cardiff, Durham, Edinburgh, Exeter, Glasgow, KCL, Kent, Lampeter, Leicester, Liverpool, Manchester, Nottingham, Oxford, Reading, RHUL, Roehampton, St. Andrews, UCL, Warwick

