

---

# CLASSICS AT UK UNIVERSITIES, 2018-19

---

## *Statistics*

**T**his year, for the first time, we publish the number of entrants for qualifications in classical subjects in schools. We include here Entry Level certificates, Level 1 and 2 certificates, GCSEs (both full and short courses) and AS and A Levels from all exam boards (OCR, AQA, WJEC and Eduqas). These statistics allow us to see the position of classics in schools and the impact of changes in policy, most notably the reform of AS and A Levels from 2015 onwards. This included the decoupling of AS and A Levels, the impact of which on subject uptake at AS Level is clear and dramatic, with the changes coming into effect for Greek and Latin in 2016 and Classical Civilisation and Ancient History in 2017. Classical Civilisation was hit particularly hard, with AS entrants falling by 82.9% in 2018. Steve Hunt provides a detailed overview of current school qualifications in Classics in Bulletin 49.

In universities, for the second year in a row, we have seen a moderate fall in the overall number of undergraduates studying classical subjects. While the numbers for 'traditional classics' remain fairly stable, the numbers for single honours programmes in 'modern classics' have fallen 3.1%. Ancient History stands out here, with a fall in the number of students both on single honours programmes and taking it as a subsidiary or supplementary subject, representing an overall decrease of 100 FTE students. Classical Art and Archaeology has conversely seen a modest increase in overall uptake, continuing to recover after a substantial dip in 2016-17. While numbers for Greek remain relatively small – and certainly lower than Latin – it seems to be enjoying something of a renaissance this year, with an increase in numbers at beginners' level and a corresponding rise in the number of students taking it as a supplementary subject. The total number of taught postgraduates remains stable, after a fairly sharp fall last year, but the number of postgraduate research students continues to decline and now, at 649, represents the lowest point in the last five years.

A small increase in the number of staff on permanent contracts (both full-time and part-time), coupled with fewer staff in the part-time temporary category, suggests a positive move towards addressing casualisation, although the total FTE has fallen this year. For the second year in a row, we see a higher percentage of women on fixed term contracts (54.3%) but, in contrast with previous years, a higher percentage of men on zero hours contracts. The most significant correlation we see in relation to the breakdown of staff by role is the consistently higher proportion of women in teaching-only roles (61%). When we look at the gender splits by grade, the largest disparity remains at the top end, where 61.5% of our Professoriate are male, as are 57.1% of our Readers/Associate Professors. We see less significant differences on the lower grades, with the gender balance more even at Senior Lecturer level, but women continue to outnumber men on the lowest grade (Associate Lecturer), this year by 8.6%.

Our enormous thanks go to Alex Orgee, the subject leader for classics at OCR, for collating and sharing the data on entrants for school qualifications, and to all those colleagues in institutions across the UK for returning their staff and student data.

**Sharon Marshall** ([Sharon.Marshall@exeter.ac.uk](mailto:Sharon.Marshall@exeter.ac.uk))

## Contributing Institutions

Birkbeck	Manchester
Birmingham	Manchester Met.
Bristol	Newcastle
Cambridge	Nottingham
Cardiff	The Open University
Durham	Oxford
Edinburgh	Queen's University Belfast
Exeter	Reading
Glasgow	Roehampton
KCL	Royal Holloway
Kent	St. Andrews
Lancaster	Swansea
Leeds	Trinity Saint David
Leicester	UCL
Liverpool	Warwick
Lincoln	Winchester

*For five institutions, data from a previous return have been re-used.*

**Table A: Overview**

	Honours students (SH + JH)				All students (incl. Other)							
	no.	FTE	% change FTE	index (1992– 3 = 100)	<i>excluding OU</i>			<i>including OU</i>				
					no.	FTE	% change FTE	index (1992– 3 = 100)	no.	FTE	% change FTE	index (1997– 8 = 100)
2009-10	6,500	<b>5,149</b>	-0.3	149	9,456	<b>5,791</b>	-0.3	118	12,070	<b>7,716</b>	12.4	123
2010-11	6,465	<b>5,164</b>	0.3	150	10,530	<b>5,817</b>	0.5	118	14,028	<b>7566</b>	-1.9	121
2011-12	7,247	<b>5,385</b>	4.3	156	9,916	<b>5,825</b>	0.1	118	12,628	<b>7,855</b>	3.8	126
2012-13	6,785	<b>5,450</b>	1.2	158	8,545	<b>5,675</b>	-2.6	115	10,921	<b>7,527</b>	-4.2	120
2013-14	7,450	<b>5,418</b>	-0.6	157	9,009	<b>5,777</b>	1.8	117	11,203	<b>7,521</b>	-0.1	120
2014-15	7,373	<b>5,542</b>	2.3	161	8,799	<b>5,875</b>	1.7	119	10,795	<b>6,956</b>	-7.5	111
2015-16	7,349	<b>5,538</b>	-0.1	161	9,253	<b>6,022</b>	2.5	122	11,248	<b>7,023</b>	1.0	112
2016-17	6,964	<b>5,606</b>	1.2	163	9,123	<b>6,169</b>	2.4	125	11,309	<b>7,263</b>	3.4	116
2017-18	6,880	<b>5,532</b>	-1.3	161	8,900	<b>6,031</b>	-2.2	122	10,617	<b>7,185</b>	-1.1	115
2018-19	6,814	<b>5,447</b>	-1.5	158	8,799	<b>5,939</b>	-1.5	121	10,253	<b>6,666</b>	-7.2	107

**Table B: Single and Joint Honours**

	'Traditional classics' (Classics, Greek, Latin)								'Modern classics' (Class. Studs, Anc. Hist., Art/Arch.)							
	single honours				joint honours				single honours				joint honours			
	no.	FTE	% change FTE	index (‘92–3 = 100)	no.	FTE	% change FTE	index (‘92–3 = 100)	no.	FTE	% change FTE	index (‘92–3 = 100)	no.	FTE	% change FTE	index (‘92–3 = 100)
	<b>trad SH</b>			<b>trad JH</b>				<b>mod SH</b>				<b>mod JH</b>				
2009-10	1,399	<b>1,271</b>	-20.6	105	252	<b>124</b>	-24.4	81	2,989	<b>2,824</b>	13.5	192	1,860	<b>929</b>	2.0	152
2010-11	1,437	<b>1,276</b>	0.4	105	254	<b>136</b>	9.7	88	2,961	<b>2,832</b>	0.3	192	1,813	<b>920</b>	-1.0	151
2011-12	1,754	<b>1,376</b>	7.8	114	314	<b>112</b>	-17.6	73	3,388	<b>3,008</b>	6.2	204	1,791	<b>889</b>	-3.4	146
2012-13	1,600	<b>1,433</b>	4.1	118	261	<b>132</b>	17.9	86	3,195	<b>2,915</b>	-3.1	198	1,729	<b>970</b>	9.1	159
2013-14	2,081	<b>1,572</b>	9.7	130	271	<b>145</b>	9.8	94	3,397	<b>2,810</b>	-3.6	191	1,701	<b>891</b>	-8.1	146
2014-15	2,063	<b>1,571</b>	0.1	130	206	<b>103</b>	-29.0	67	3,406	<b>3,050</b>	8.5	207	1,698	<b>818</b>	-8.2	134
2015-16	2,048	<b>1,566</b>	-0.3	129	204	<b>106</b>	2.9	69	3,463	<b>3,060</b>	0.3	208	1,635	<b>805</b>	-1.6	132
2016-17	1,682	<b>1,521</b>	-2.9	126	291	<b>181</b>	70.8	118	3,352	<b>3,064</b>	0.1	208	1,639	<b>840</b>	4.3	138
2017-18	1,575	<b>1,451</b>	-4.6	120	281	<b>143</b>	-21.0	93	3,167	<b>2,983</b>	-2.6	203	1,857	<b>956</b>	13.8	157
2018-19	1,580	<b>1,448</b>	-0.2	120	280	<b>141</b>	-1.4	92	3,068	<b>2,892</b>	-3.1	196	1,886	<b>966</b>	1.0	159

**TABLE C.1:  
ALL STUDENTS**

	'Traditional classics'					
	Classics		Greek		Latin	
	No.	FTE	No.	FTE	No.	FTE
<b>SINGLE HONOURS</b>						
<i>2014-15</i>	1,788	<b>1,453</b>	101	<b>46</b>	174	<b>72</b>
<i>2015-16</i>	1,780	<b>1,446</b>	102	<b>48</b>	166	<b>73</b>
<i>2016-17</i>	1,567	<b>1,431</b>	58	<b>40</b>	57	<b>50</b>
<i>2017-18</i>	1,517	<b>1,415</b>	29	<b>12</b>	29	<b>24</b>
<i>2018-19</i>	1,520	<b>1,414</b>	32	<b>11</b>	28	<b>23</b>
<b>JOINT HONOURS</b>						
<i>2014-15</i>	98	<b>56</b>	22	<b>10</b>	86	<b>38</b>
<i>2015-16</i>	110	<b>62</b>	21	<b>10</b>	73	<b>34</b>
<i>2016-17</i>	185	<b>118</b>	31	<b>19</b>	75	<b>43</b>
<i>2017-18</i>	191	<b>99</b>	21	<b>11</b>	69	<b>33</b>
<i>2018-19</i>	190	<b>99</b>	20	<b>10</b>	70	<b>32</b>
<b>OTHER</b>						
<i>2014-15</i>	104	<b>30</b>	189	<b>89</b>	224	<b>92</b>
<i>2015-16</i>	104	<b>29</b>	149	<b>67</b>	124	<b>33</b>
<i>2016-17</i>	142	<b>44</b>	146	<b>64</b>	376	<b>148</b>
<i>2017-18</i>	30	<b>8</b>	118	<b>51</b>	288	<b>110</b>
<i>2018-19</i>	32	<b>9</b>	148	<b>64</b>	290	<b>112</b>
<b>ALL</b>						
<i>2014-15</i>	1,990	<b>1,539</b>	312	<b>145</b>	484	<b>202</b>
<i>2015-16</i>	1,994	<b>1,537</b>	272	<b>125</b>	363	<b>140</b>
<i>2016-17</i>	1,894	<b>1,593</b>	235	<b>123</b>	508	<b>241</b>
<i>2017-18</i>	1,738	<b>1,522</b>	168	<b>74</b>	386	<b>167</b>
<i>2018-19</i>	1,742	<b>1,522</b>	200	<b>85</b>	388	<b>167</b>

*Figures in italics include Open University data.*

**TABLE C.2:  
ALL STUDENTS**

	'Modern		'classics'		Class.	
	Class. Civ./Studs		Anc. Hist.		Art/Arch.	
	No.	FTE	No.	FTE	No.	FTE
<b>SINGLE HONOURS</b>						
<i>2014-15</i>	1,422	<b>1,343</b>	1,726	<b>1,639</b>	258	<b>68</b>
<i>2015-16</i>	1,395	<b>1,319</b>	1,814	<b>1,675</b>	254	<b>66</b>
<i>2016-17</i>	1,365	<b>1,287</b>	1,907	<b>1,722</b>	80	<b>55</b>
<i>2017-18</i>	1,455	<b>1,367</b>	1,647	<b>1,580</b>	65	<b>36</b>
<i>2018-19</i>	1,451	<b>1,359</b>	1,543	<b>1,494</b>	74	<b>39</b>
<b>JOINT HONOURS</b>						
<i>2014-15</i>	564	<b>266</b>	1027	<b>504</b>	107	<b>48</b>
<i>2015-16</i>	563	<b>264</b>	996	<b>497</b>	77	<b>45</b>
<i>2016-17</i>	557	<b>268</b>	977	<b>510</b>	105	<b>62</b>
<i>2017-18</i>	581	<b>281</b>	1,108	<b>573</b>	169	<b>101</b>
<i>2018-19</i>	594	<b>288</b>	1,120	<b>575</b>	172	<b>103</b>
<b>OTHER</b>						
<i>2014-15</i>	<i>1,870</i>	<b>849</b>	562	<b>141</b>	473	<b>211</b>
<i>2015-16</i>	<i>1,750</i>	<b>703</b>	1,099	<b>399</b>	269	<b>52</b>
<i>2016-17</i>	<i>1,693</i>	<b>690</b>	1,334	<b>462</b>	250	<b>47</b>
<i>2017-18</i>	<i>1,107</i>	<b>394</b>	855	<b>196</b>	755	<b>309</b>
<i>2018-19</i>	<i>1,106</i>	<b>395</b>	795	<b>180</b>	774	<b>313</b>
<b>ALL</b>						
<i>2014-15</i>	<i>3,856</i>	<b>2,459</b>	3,315	<b>2,284</b>	838	<b>327</b>
<i>2015-16</i>	<i>3,708</i>	<b>2,286</b>	3,909	<b>2,571</b>	600	<b>163</b>
<i>2016-17</i>	<i>3,615</i>	<b>2,245</b>	4,218	<b>2,694</b>	435	<b>164</b>
<i>2017-18</i>	<i>3,143</i>	<b>2,042</b>	3,610	<b>2,349</b>	989	<b>446</b>
<i>2018-19</i>	<i>3,151</i>	<b>2,042</b>	3,458	<b>2,249</b>	1,020	<b>455</b>

Figures in *italics* include OU data.

**TABLE D.1: STAFF**

	Full-time				Part-time				Other	
	permanent		temporary		permanent		temporary		no.	FTE
	no.	FTE	no.	FTE	no.	FTE	no.	FTE		
2009-10	369	<b>369</b>	45	<b>45</b>	26	<b>12</b>	92	<b>39</b>	155	<b>33</b>
2010-11	380	<b>377</b>	36	<b>24</b>	26	<b>12</b>	106	<b>44</b>	161	<b>44</b>
2011-12	399	<b>389</b>	40	<b>38</b>	28	<b>13</b>	71	<b>24</b>	135	<b>55</b>
2012-13	392	<b>389</b>	41	<b>39</b>	22	<b>11</b>	80	<b>20</b>	114	<b>50</b>
2013-14	395	<b>388</b>	41	<b>40</b>	22	<b>10</b>	56	<b>17</b>	68	<b>60</b>
2014-15	397	<b>386</b>	49	<b>47</b>	30	<b>14</b>	64	<b>23</b>	172	<b>82</b>
2015-16	382	<b>374</b>	50	<b>48</b>	28	<b>16</b>	52	<b>10</b>	183	<b>90</b>
2016-17	399	<b>395</b>	59	<b>57</b>	31	<b>19</b>	40	<b>14</b>	170	<b>87</b>
2017-18	417	<b>414</b>	55	<b>51</b>	29	<b>16</b>	69	<b>20</b>	186	<b>91</b>
2018-19	424	<b>415</b>	61	<b>54</b>	33	<b>19</b>	55	<b>17</b>	182	<b>79</b>

**Summary (all staff)**

	no.	FTE	% <i>change</i>	on leave (FTE)	effective FTE	% <i>change</i>
2014-15	795	<b>552</b>	7.2	76	<b>476</b>	1.7
2015-16	695	<b>547</b>	-0.9	78	<b>469</b>	-1.5
2016-17	699	<b>572</b>	4.6	68	<b>504</b>	7.5
2017-18	756	<b>592</b>	3.5	74	<b>518</b>	2.8
2018-19	755	<b>584</b>	-1.4	62	<b>522</b>	0.8

## D.2: STAFF BY GRADE

	no.			%		
	Male	Female	Other preferred self-description	Male	Female	Other preferred self-description
<b>ASSOC. LECTURER</b>						
2016-17	20	27	0	42.6	57.4	0
2017-18	27	41	0	39.7	60.3	0
2018-19	59	70	0	45.7	54.3	0
<b>LECTURER</b>						
2016-17	71	53	0	57.3	42.7	0
2017-18	73	60	0	54.9	45.1	0
2018-19	61	73	0	45.5	54.5	0
<b>SENIOR LECTURER</b>						
2016-17	32	29	0	52.5	47.5	0
2017-18	37	40	0	48.1	51.9	0
2018-19	45	47	0	48.9	51.1	0
<b>READER</b>						
2016-17	18	17	0	51.4	48.6	0
2017-18	20	10	0	66.7	33.3	0
2018-19	32	24	0	57.1	42.9	0
<b>PROFESSOR</b>						
2016-17	44	23	0	65.7	34.3	0
2017-18	56	29	0	65.9	34.1	0
2018-19	64	40	0	61.5	38.5	0

Figures included in tables D.2, D.3 and D.4 are from the following 29 institutions: Birkbeck, Birmingham, Bristol, Cardiff, Durham, Edinburgh, Exeter, Glasgow, King's College London, Kent, Lancaster, Leeds, Leicester, Lincoln, Liverpool, Manchester, Manchester Metropolitan, Newcastle, Nottingham, The Open University, Reading, Roehampton, Royal Holloway, St Andrews, Swansea, Trinity St David, University College London, Warwick, Winchester.



### D.3: STAFF BY CONTRACT TYPE

	no.			%		
	Male	Female	Other preferred self-description	Male	Female	Other preferred self-description
<b>FIXED TERM/ TEMPORARY</b>						
<i>2016-17</i>	39	32	0	54.9	45.1	0
<i>2017-18</i>	59	60	0	49.6	50.4	0
<i>2018-19</i>	80	95	0	45.7	54.3	0
<b>PERMANENT</b>						
<i>2016-17</i>	134	106	0	55.8	44.2	0
<i>2017-18</i>	135	132	0	50.6	49.4	0
<i>2018-19</i>	183	174	0	51.3	48.7	0
<b>ZERO HOURS</b>						
<i>2016-17</i>	9	14	0	39.1	60.9	0
<i>2017-18</i>	29	30	0	49.2	50.8	0
<i>2018-19</i>	24	17	0	58.5	41.5	0

### D.4: STAFF BY ROLE

	no.			%		
	Male	Female	Other preferred self-description	Male	Female	Other preferred self-description
<b>RESEARCH AND TEACHING</b>						
<i>2016-17</i>	135	103	0	56.7	43.3	0
<i>2017-18</i>	174	135	0	56.3	43.7	0
<i>2018-19</i>	194	176	0	52.4	47.6	0
<b>TEACHING ONLY</b>						
<i>2016-17</i>	29	30	0	49.2	50.8	0
<i>2017-18</i>	28	43	0	39.4	60.6	0
<i>2018-19</i>	30	47	0	39.0	61.0	0
<b>RESEARCH ONLY</b>						
<i>2016-17</i>	18	19	0	48.6	51.4	0
<i>2017-18</i>	20	21	0	48.8	51.2	0
<i>2018-19</i>	21	17	0	55.3	44.7	0

**TABLE E: BEGINNERS'  
LANGUAGES**

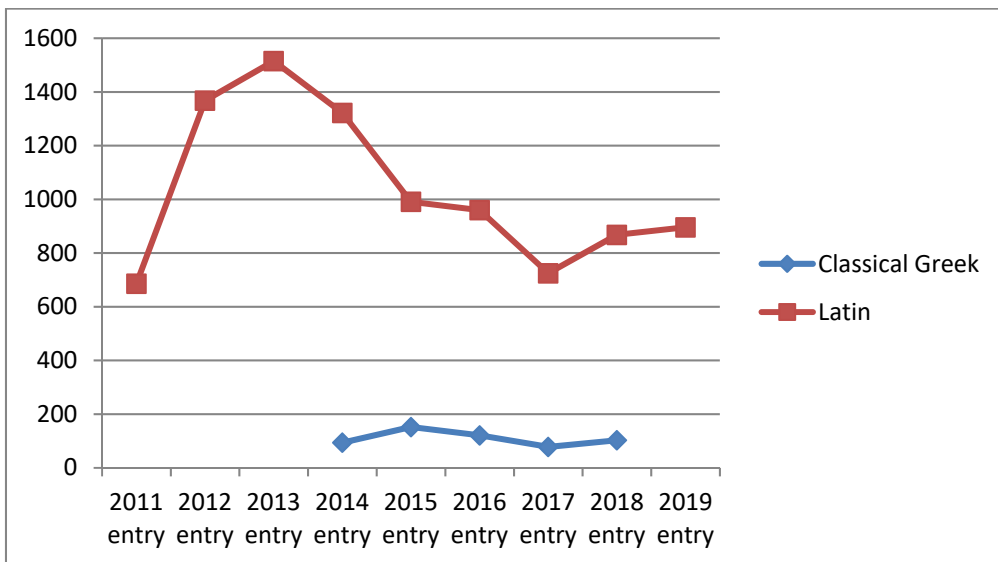
	<b>Greek</b>			<b>Latin</b>		
	no.	<b>FTE</b>	<i>% change</i>	no.	<b>FTE</b>	<i>% change</i>
<b>Undergraduates</b>						
<i>2014-15</i>	729	<b>298</b>	<i>-1.7</i>	768	<b>224</b>	<i>-43.7</i>
<i>2015-16</i>	762	<b>279</b>	<i>-6.4</i>	740	<b>222</b>	<i>-0.9</i>
<i>2016-17</i>	660	<b>308</b>	<i>10.4</i>	935	<b>404</b>	<i>82</i>
<i>2017-18</i>	585	<b>255</b>	<i>-17.2</i>	821	<b>335</b>	<i>-17.1</i>
<i>2018-19</i>	607	<b>267</b>	<i>4.7</i>	829	<b>319</b>	<i>-4.8</i>
<b>Postgraduates</b>						
<i>2014-15</i>	124	<b>37</b>	<i>68.2</i>	162	<b>39</b>	<i>34.5</i>
<i>2015-16</i>	99	<b>36</b>	<i>-2.7</i>	118	<b>37</b>	<i>-5.1</i>
<i>2016-17</i>	97	<b>43</b>	<i>19.4</i>	156	<b>65</b>	<i>75.7</i>
<i>2017-18</i>	97	<b>39</b>	<i>-9.3</i>	142	<b>61</b>	<i>-6.2</i>
<i>2018-19</i>	99	<b>40</b>	<i>2.6</i>	150	<b>61</b>	<i>0.0</i>

**TABLE F: POSTGRADUATES**

	Full-time	Part-time	Other (FTE = 0)	Total no.	FTE	% change
<b>TAUGHT</b>						
2014-15	399	226	10	635	<b>475</b>	-1.9
2015-16	347	243	8	598	<b>467</b>	-1.7
2016-17	389	234	2	625	<b>504</b>	7.9
2017-18	351	198	0	549	<b>445</b>	-11.7
2018-19	352	199	1	551	<b>447</b>	0.5
<b>RESEARCH</b>						
2014-15	566	164	25	755	<b>625</b>	4.3
2015-16	535	131	24	690	<b>578</b>	-7.5
2016-17	547	116	15	678	<b>580</b>	0.3
2017-18	536	134	4	674	<b>573</b>	-1.2
2018-19	527	122	3	649	<b>553</b>	-3.5

**TABLE G.1:  
ENTRY LEVEL**

YEAR OF ENTRY	Greek		Latin	
	No.	% change	No.	% change
2011	--	--	686	--
2012	--	--	1,368	99.4
2013	--	--	1,515	10.7
2014	94	--	1,322	-12.7
2015	152	61.7	991	-25.0
2016	121	-20.4	960	-3.1
2017	78	-35.5	725	-24.5
2018	103	32.1	868	19.7
2019	--	--	896	3.2



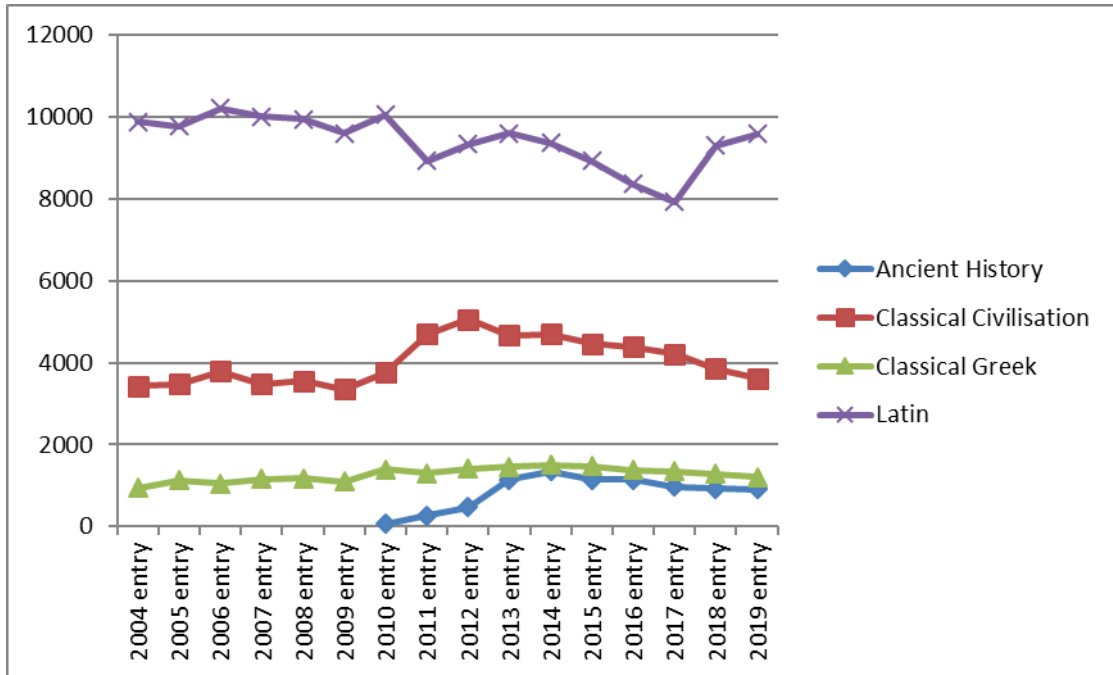
**TABLE G.2:  
GCSE**

YEAR OF ENTRY	Full Course							
	Ancient History		Class. Civ.		Greek		Latin	
	No.	% change	No.	% change	No.	% change	No.	% change
2004	--	--	3,427	--	943	--	9,875	--
2005	--	--	3,471	1.3	1,122	19.0	9,772	-1.0
2006	--	--	3,790	9.2	1,058	-5.7	10,214	4.5
2007	--	--	3,470	-8.4	1,158	9.5	10,007	-2.0
2008	--	--	3,552	2.4	1,171	1.1	9,939	-0.7
2009	--	--	3,360	-5.4	1,093	-6.7	9,605	-3.4
2010	--	--	3,573	6.3	1,343	22.9	9,790	1.9
2011	200	--	4,006	12.1	1,200	-10.6	8,594	-12.2
2012	350	75.0	4,443	10.9	1,263	5.3	8,995	4.7
2013	1,037	196.3	4,197	-5.5	1,299	2.9	9,412	4.6
2014	1,257	21.2	4,329	3.1	1,316	1.3	9,138	-2.9
2015	1,072	-14.7	4,240	-2.1	1,329	1.0	8,727	-4.5
2016	1,084	1.1	4,186	-1.3	1,231	-7.4	8,192	-6.1
2017	919	-15.2	4,082	-2.5	1,216	-1.2	7,800	-4.8
2018	915	-0.4	3,706	-9.2	1,289	6.0	9,297	19.2
2019	908	-0.8	3,616	-2.4	1,204	-6.6	9,590	3.2

**Short Course**

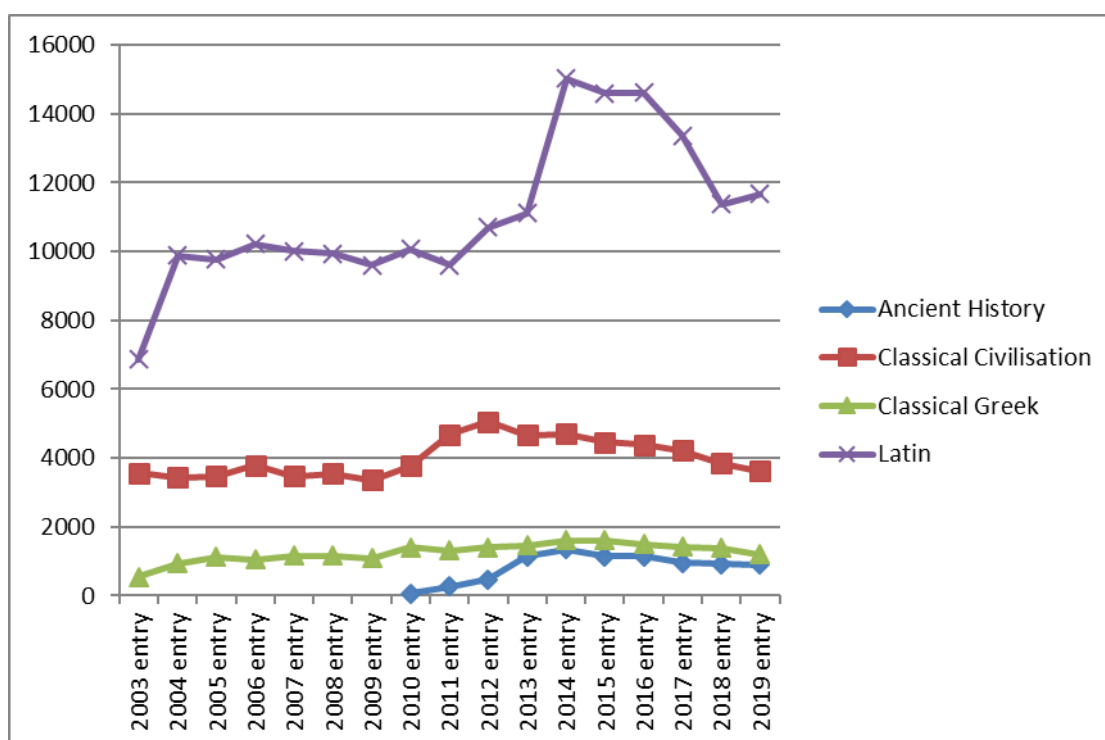
	Ancient History		Class. Civ.		Greek		Latin	
	No.	% change	No.	% change	No.	% change	No.	% change
2010	62	--	191	--	57	--	271	--
2011	67	8.1	687	259.7	106	86.0	328	21.0
2012	123	83.6	612	-10.9	142	34.0	333	1.5
2013	104	-15.4	465	-24.0	166	16.9	193	-42.0
2014	87	-16.3	376	-19.1	195	17.5	234	21.2
2015	79	-9.2	226	-39.9	137	-29.7	203	-13.2
2016	55	-30.4	203	-10.2	153	11.7	167	-17.7
2017	47	-14.5	137	-32.5	125	-18.3	121	-27.5
2018	5	-89.4	140	2.2	--	--	--	--

## FULL AND SHORT COURSE



**TABLE G.3:  
ENTRY LEVEL +  
GCSE + LEVEL 1/2  
CERTIFICATE**

YEAR OF ENTRY	Ancient History		Class. Civ.		Greek		Latin	
	No.	% change	No.	% change	No.	% change	No.	% change
2003	--	--	3,569	--	543	--	6,861	--
2004	--	--	3,427	-4.0	943	73.7	9,875	43.9
2005	--	--	3,471	1.3	1,122	19.0	9,772	-1.0
2006	--	--	3,790	9.2	1,058	-5.7	10,214	4.5
2007	--	--	3,470	-8.4	1,158	9.5	10,007	-2.0
2008	--	--	3,552	2.4	1,171	1.1	9,939	-0.7
2009	--	--	3,360	-5.4	1,093	-6.7	9,605	-3.4
2010	62	--	3,764	12.0	1,400	28.1	10,061	4.7
2011	267	330.6	4,693	24.7	1,306	-6.7	9,608	-4.5
2012	473	77.2	5,055	7.7	1,405	7.6	10,696	11.3
2013	1,141	141.2	4,662	-7.8	1,465	4.3	11,120	4.0
2014	1,344	17.8	4,705	0.9	1,605	9.6	15,022	35.1
2015	1,151	-14.4	4,466	-5.1	1,618	0.8	14,592	-2.9
2016	1,139	-1.0	4,389	-1.7	1,505	-7.0	14,609	0.1
2017	966	-15.2	4,219	-3.9	1,419	-5.7	13,359	-8.6
2018	920	-4.8	3,846	-8.8	1,392	-1.9	11,380	-14.8
2019	908	-1.3	3,616	-6.0	1,204	-13.5	11,676	2.6



**TABLE G.4:  
A LEVEL + AS LEVEL**

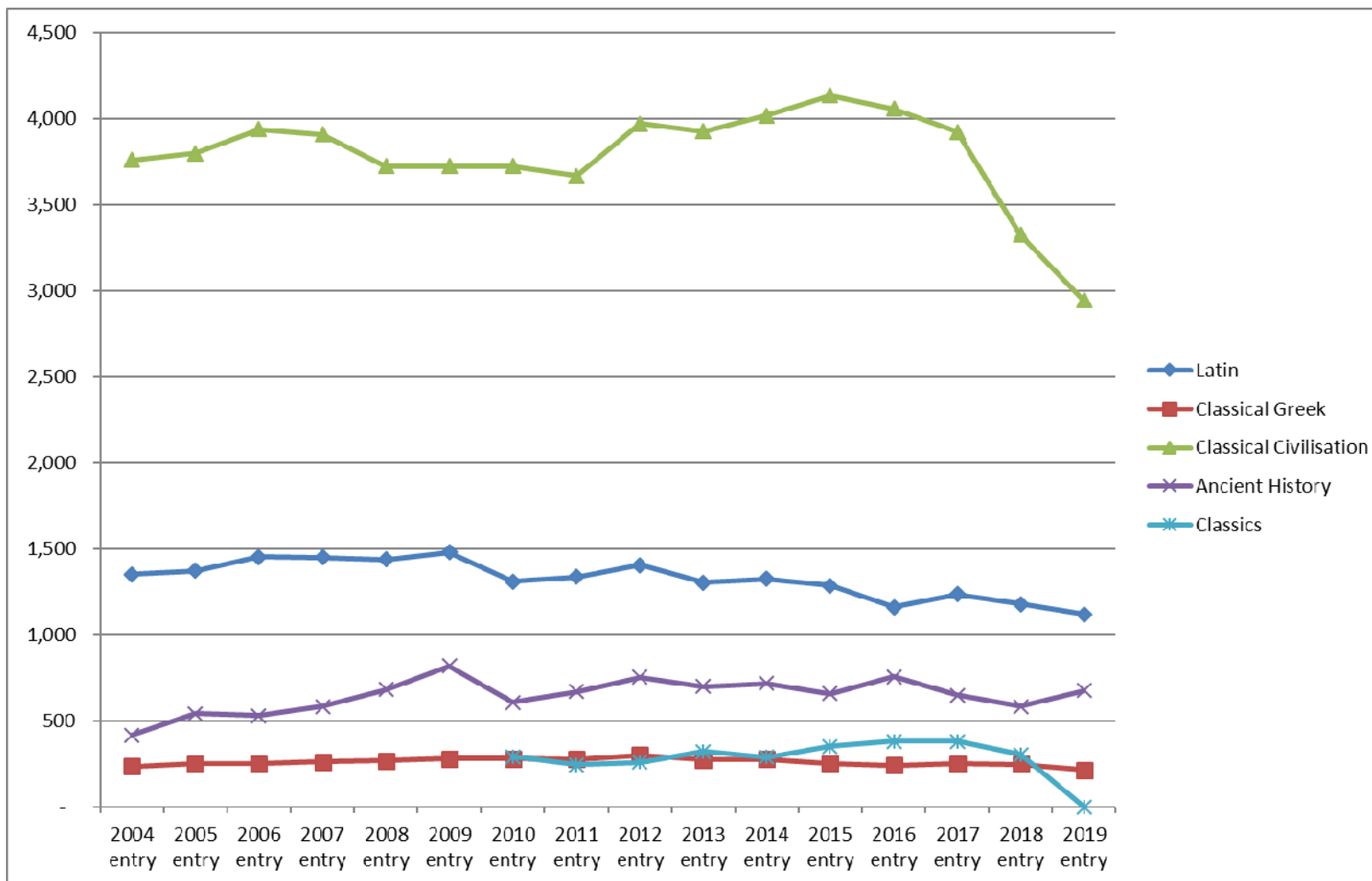
YEAR OF ENTRY	A LEVEL									
	Latin		Greek		Class. Civ.		Ancient History		Classics	
	No.	% change	No.	% change	No.	% change	No.	% change	No.	% change
2004	1,353	--	236	--	3,760	--	416	--	--	--
2005	1,372	1.4	249	5.5	3,799	1.0	542	30.3	--	--
2006	1,453	5.9	251	0.8	3,940	3.7	530	-2.2	--	--
2007	1,451	-0.1	263	4.8	3,909	-0.8	584	10.2	--	--
2008	1,437	-1.0	269	2.3	3,725	-4.7	682	16.8	--	--
2009	1,480	3.0	281	4.5	3,724	0.0	818	19.9	--	--
2010	1,309	-11.6	280	-0.4	3,726	0.1	608	-25.7	293	--
2011	1,338	2.2	277	-1.1	3,669	-1.5	671	10.4	243	-17.1
2012	1,404	4.9	300	8.3	3,971	8.2	754	12.4	258	6.2
2013	1,305	-7.1	274	-8.7	3,929	-1.1	700	-7.2	321	24.4
2014	1,325	1.5	276	0.7	4,020	2.3	717	2.4	288	-10.3
2015	1,285	-3.0	252	-8.7	4,135	2.9	659	-8.1	352	22.2
2016	1,160	-9.7	240	-4.8	4,060	-1.8	755	14.6	380	8.0
2017	1,237	6.6	250	4.2	3,925	-3.3	650	-13.9	382	0.5
2018	1,178	-4.8	246	-1.6	3,327	-15.2	584	-10.2	303	-20.7
2019	1,121	-4.8	213	-13.4	2,946	-11.5	676	15.8	--	--



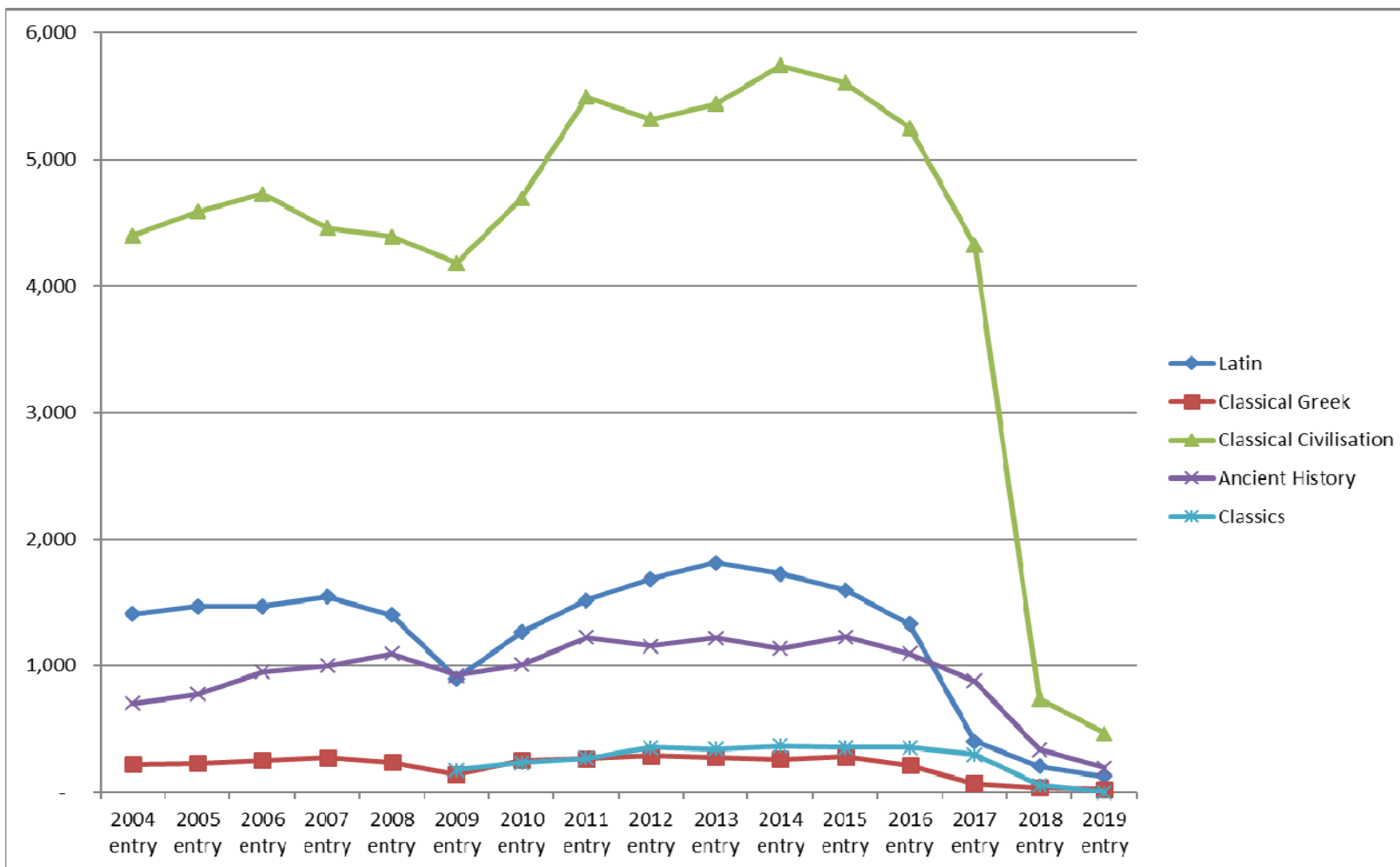
**AS LEVEL**

<b>YEAR OF ENTRY</b>	<b>Latin</b>		<b>Greek</b>		<b>Class. Civ.</b>		<b>Ancient History</b>		<b>Classics</b>	
	No.	% change	No.	% change	No.	% change	No.	% change	No.	% change
2004	1,410	--	223	--	4,397	--	705	--	--	--
2005	1,468	4.1	229	2.7	4,585	4.3	775	9.9	--	--
2006	1,468	0.0	253	10.5	4,728	3.1	951	22.7	--	--
2007	1,547	5.4	273	7.9	4,459	-5.7	1,001	5.3	--	--
2008	1,401	-9.4	240	-12.1	4,389	-1.6	1,095	9.4	--	--
2009	902	-35.6	141	-41.3	4,180	-4.8	924	-15.6	179	--
2010	1,266	40.4	254	80.1	4,690	12.2	1,008	9.1	234	30.7
2011	1,519	20.0	268	5.5	5,492	17.1	1,223	21.3	270	15.4
2012	1,685	10.9	289	7.8	5,318	-3.2	1,155	-5.6	353	30.7
2013	1,813	7.6	279	-3.5	5,437	2.2	1,221	5.7	344	-2.5
2014	1,726	-4.8	264	-5.4	5,742	5.6	1,135	-7.0	365	6.1
2015	1,597	-7.5	282	6.8	5,606	-2.4	1,227	8.1	356	-2.5
2016	1,329	-16.8	215	-23.8	5,249	-6.4	1,095	-10.8	355	-0.3
2017	403	-69.7	70	-67.4	4,323	-17.6	881	-19.5	298	-16.1
2018	204	-49.4	37	-47.1	741	-82.9	337	-61.7	59	-80.2
2019	127	-37.7	26	-29.7	467	-37.0	195	-42.1	--	--

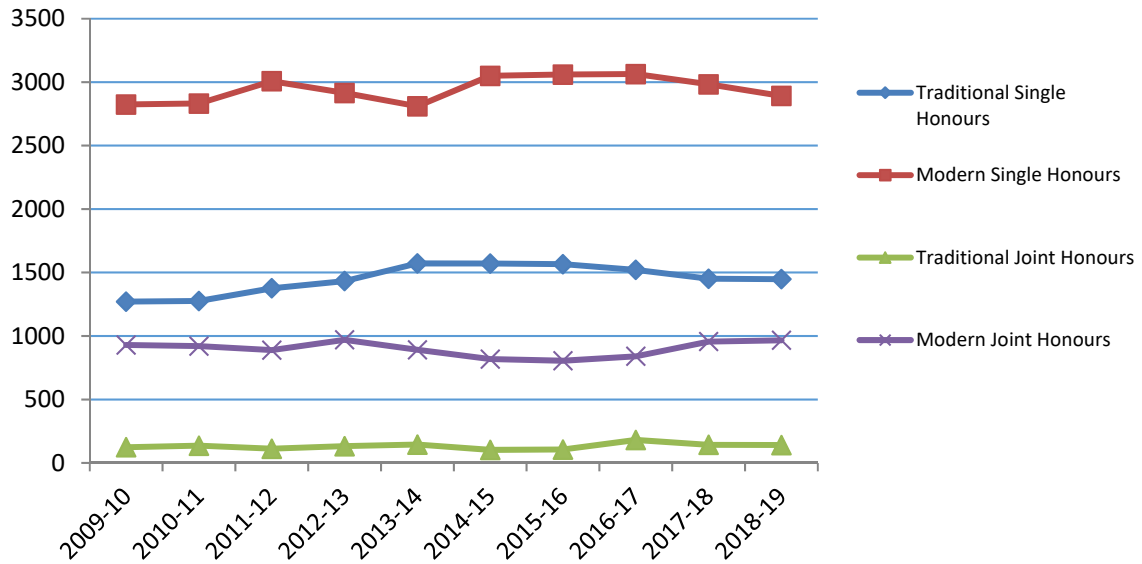
## A LEVEL



### AS LEVEL

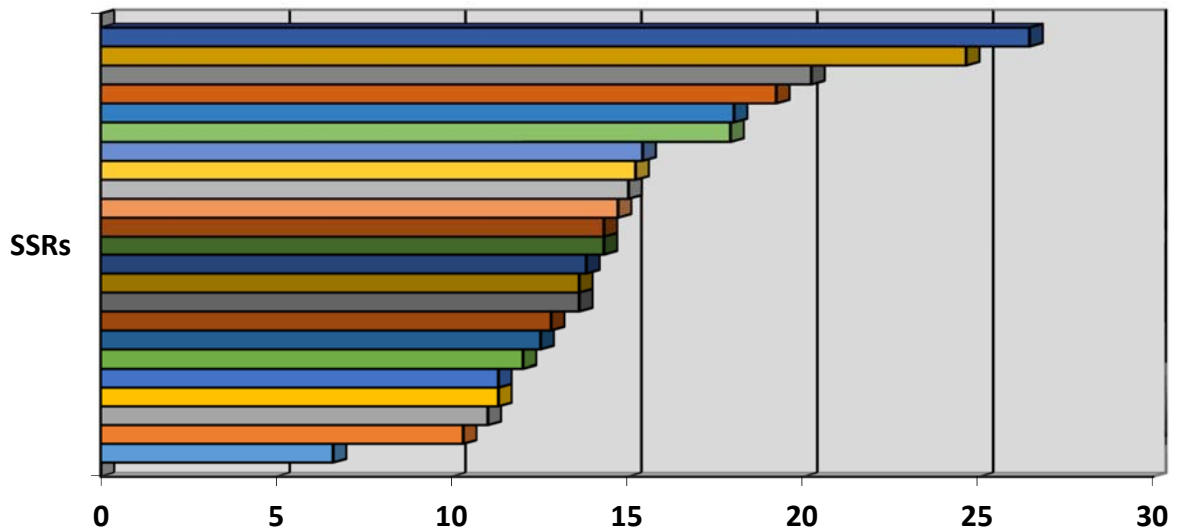


FTE Student Numbers in the UK  
 'Traditional' vs. 'Modern' Classics, Single and Joint Honours  
 10-year view (2009-2019)



Staff-Student Ratios  
 2018-19\*

The average SSR is 1:15.0. The highest SSR is 1:26.4; the lowest SSR is 1:6.6.



\* figures included in this graph are from the following 23 institutions: Birmingham, Bristol, Cambridge, Cardiff, Durham, Edinburgh, Exeter, Glasgow, Kent, King's College London, Leeds, Liverpool, Manchester, Newcastle, Nottingham, Oxford, Reading, Roehampton, Royal Holloway, St Andrews, Swansea, University College London, Warwick.