

# CLASSICS AT UK UNIVERSITIES, 2014-15 STATISTICS

With 31 institutions contributing to the present statistics return with their staff and student numbers, the CUCD Statistics have reached an all-time-high! Unsurprisingly, this year's statistics document the continued vigorous interest in the study of Classics – 'old' and 'new' – amongst the UK's student population. This is well reflected in the extraordinarily large number of students studying for a single honours degree in one or other 'modern' classical subject (typically Ancient History or Classical Civilisation). For the first time, the number of students in these degree programmes is *clearly* over 3,000: the 3,000 hurdle has been passed only once before, in 2011-12, but only by a very small margin.

In the light of the large number of students studying a classical subject, staff-student ratios remain high in many places, even if the average has remained virtually unchanged from previous years. Recent student intake figures have however had an effect on individual institutions' staff-student ratios, seemingly producing in 2014-15 three clusters – 1:12-1:15, 1:17-1:20 and 1:22ish – with three institutions taking up unchallenged places at the lower and higher ends of the spectrum (with 1:7-8 and 1:24 respectively).

The figures for beginners' language teaching remain sound too – even if there appears to be a significant drop in the number of students learning Latin. But there is no need to be concerned: the seeming drop in numbers is merely a reflection of the biennial course provisioning of the Beginning Latin module at the OU! The figures are bound to return to 'normal' in next year's statistics return.

Last but not least, this year's statistics were produced in the context of significant interest in CUCD's managing of the staff and student figures of 'classical departments' by a cognate subject – History. Clearly, such statistics are an object of envy, and CUCD and all contributing departments can take pride in being able to unite and co-ordinate the many 'classical departments' across the country to produce them on an annual basis. Once more, then, a big thank you to all those helping to put together their institution's returns, academic and administrative colleagues alike.

ULRIKE ROTH  
UNIVERSITY OF EDINBURGH

## CONTRIBUTING DEPARTMENTS

Belfast	Liverpool
Birkbeck	Manchester
Birmingham	Manchester Met.
Bristol	Newcastle
Cambridge	Nottingham
Cardiff	Oxford
Durham	Reading
Edinburgh	Roehampton
Exeter*	Royal Holloway*
Glasgow	St. Andrews
KCL*	Swansea*
Kent	Trinity St. David (Lampeter)
Lancaster	UCL
Leeds*	Warwick
Leicester	Winchester

and the OU!

\* Data from a previous return have been re-used.

**Table A : Overview**

	Honours students (SH + JH)				All students (incl. Other)							
					<i>excluding OU</i>				<i>including OU</i>			
	no.	<b>FTE</b>	% change <i>FTE</i>	<i>index</i> (1992–3 = 100)	no.	<b>FTE</b>	% change <i>FTE</i>	<i>index</i> (1992–3 = 100)	no.	<b>FTE</b>	% change <i>FTE</i>	<i>index</i> (1997–8 = 100)
2005-6	6,186	<b>4,868</b>	6.5	141	8,937	<b>5,500</b>	5.4	112	17,448	<b>6,524</b>	4.5	104
2006-7	6,258	<b>4,878</b>	0.2	142	9,296	<b>5,600</b>	1.8	114	15,032	<b>6,696</b>	2.6	107
2007-8	6,812	<b>5,044</b>	3.6	146	9,851	<b>5,672</b>	3.1	115	16,183	<b>6,831</b>	4.7	109
2008-9	6,922	<b>5,163</b>	6.1	150	9,980	<b>5,808</b>	5.6	118	16,334	<b>6,864</b>	5.2	110
2009-10	6,500	<b>5,149</b>	-0.3	149	9,456	<b>5,791</b>	-0.3	118	12,070	<b>7,716</b>	12.4	123
2010-11	6,465	<b>5,164</b>	0.3	150	10,530	<b>5,817</b>	0.5	118	14,028	<b>7,566</b>	-2.0	121
2011-12	7,247	<b>5,385</b>	4.3	156	9,916	<b>5,825</b>	0.1	118	12,628	<b>7,855</b>	3.8	126
2012-13	6,785	<b>5,450</b>	1.2	158	8,545	<b>5,675</b>	-2.6	115	10,921	<b>7,527</b>	-4.2	120
2013-14	7,450	<b>5,418</b>	-0.6	157	9,009	<b>5,777</b>	1.8	117	11,203	<b>7,521</b>	-0.07	120
2014-15	7,373	<b>5,542</b>	2.3	160	8,799	<b>5,875</b>	1.7	119	10,795	<b>6,956</b>	-7.5	111

**Table B: Single and Joint Honours**

	'Traditional classics' (Classics, Greek, Latin)								'Modern classics' (Class. Studs, Anc. Hist., Art/Arch.)							
	single honours				joint honours				single honours				joint honours			
	no.	FTE	% change FTE	index (‘92-3 = 100)	no.	FTE	% change FTE	index (‘92-3 = 100)	no.	FTE	% change FTE	index (‘92-3 = 100)	no.	FTE	% change FTE	index (‘92-3 = 100)
	<b>trad SH</b>			<b>trad JH</b>				<b>mod SH</b>				<b>mod JH</b>				
2005-6	1,624	<b>1,300</b>	6.2	107	200	<b>96</b>	-16.2	62	2,792	<b>2,576</b>	6.3	175	1,571	<b>896</b>	10.9	147
2006-7	1,616	<b>1,306</b>	0.4	108	187	<b>92</b>	-4.0	60	2,808	<b>2,575</b>	0.0	175	1,647	<b>905</b>	1.0	149
2007-8	1,773	<b>1,440</b>	10.8	119	296	<b>163</b>	70.0	106	2,924	<b>2,506</b>	-2.7	170	1,819	<b>935</b>	4.3	154
2008-9	1,958	<b>1,600</b>	23.0	132	289	<b>164</b>	71.3	107	2,822	<b>2,488</b>	-3.4	169	1,853	<b>911</b>	1.6	150
2009-10	1,399	<b>1,271</b>	-20.6	105	252	<b>124</b>	-24.4	119	2,989	<b>2,824</b>	13.5	192	1,860	<b>929</b>	2.0	153
2010-11	1,437	<b>1,276</b>	0.0	106	254	<b>136</b>	10	88	2,961	<b>2,832</b>	0.0	192	1,813	<b>920</b>	-1.0	151
2011-12	1,754	<b>1,376</b>	8.0	114	314	<b>112</b>	-18.0	73	3,388	<b>3,008</b>	6.0	204	1,791	<b>889</b>	-3.0	146
2012-13	1,600	<b>1,433</b>	4.1	118	261	<b>132</b>	17.8	85	3,195	<b>2,915</b>	-3.1	198	1,729	<b>970</b>	9.1	159
2013-14	2,081	<b>1,572</b>	9.6	144	271	<b>145</b>	9.8	94	3,397	<b>2,810</b>	-3.6	190	1,701	<b>891</b>	-8.1	146
2014-15	2,063	<b>1,571</b>	0	144	206	<b>103</b>	-28.9	66	3,406	<b>3,050</b>	8.5	207	1,698	<b>818</b>	-8.2	134

**TABLE C.1:  
ALL STUDENTS**

	'Traditional classics'					
	Classics		Greek		Latin	
	No.	FTE	No.	FTE	No.	FTE
<b>SINGLE HONOURS</b>						
2010-11	1,318	<b>1,215</b>	40	<b>23</b>	79	<b>38</b>
2011-12	1,306	<b>1,161</b>	105	<b>24</b>	152	<b>50</b>
2012-13	1,497	<b>1,358</b>	40	<b>27</b>	63	<b>48</b>
2013-14	1,780	<b>1,444</b>	107	<b>46</b>	194	<b>82</b>
2014-15	1,788	<b>1,453</b>	101	<b>46</b>	174	<b>72</b>
<b>JOINT HONOURS</b>						
2010-11	110	<b>59</b>	17	<b>10</b>	127	<b>68</b>
2011-12	134	<b>47</b>	33	<b>8</b>	147	<b>57</b>
2012-13	144	<b>72</b>	23	<b>12</b>	94	<b>48</b>
2013-14	164	<b>85</b>	25	<b>12</b>	82	<b>48</b>
2014-15	98	<b>56</b>	22	<b>10</b>	86	<b>38</b>
<b>OTHER</b>						
2010-11	110	<b>30</b>	<i>270</i>	<b>116</b>	932	<b>393</b>
2011-12	184	<b>55</b>	<i>223</i>	<b>97</b>	743	<b>311</b>
2012-13	204	<b>35</b>	<i>191</i>	<b>89</b>	589	<b>245</b>
2013-14	58	<b>32</b>	<i>199</i>	<b>175</b>	580	<b>248</b>
2014-15	104	<b>30</b>	<i>189</i>	<b>89</b>	224	<b>92</b>
<b>ALL</b>						
2010-11	1,538	<b>1,304</b>	327	<b>149</b>	1,138	<b>499</b>
2011-12	1,624	<b>1,263</b>	361	<b>129</b>	1,052	<b>418</b>
2012-13	1,845	<b>1,465</b>	254	<b>128</b>	746	<b>341</b>
2013-14	2,002	<b>1,561</b>	331	<b>233</b>	856	<b>378</b>
2014-15	1,990	<b>1,539</b>	312	<b>145</b>	484	<b>202</b>

*Figures in italics include Open University data.*

**TABLE C.2:  
ALL STUDENTS**

	'Modern classics'					
	Class. Civ./Studs		Anc. Hist.		Class. Art/Arch.	
	No.	FTE	No.	FTE	No.	FTE
<b>SINGLE HONOURS</b>						
<i>2010-11</i>	1,435	<b>1,388</b>	1,470	<b>1,397</b>	66	<b>47</b>
<i>2011-12</i>	1,641	<b>1,457</b>	1,672	<b>1,500</b>	75	<b>51</b>
<i>2012-13</i>	1,565	<b>1,376</b>	1,594	<b>1,519</b>	36	<b>20</b>
<i>2013-14</i>	1,423	<b>1,224</b>	1,749	<b>1,535</b>	225	<b>52</b>
<i>2014-15</i>	1,422	<b>1,343</b>	1,726	<b>1,639</b>	258	<b>68</b>
<b>JOINT HONOURS</b>						
<i>2010-11</i>	626	<b>310</b>	1,089	<b>557</b>	98	<b>53</b>
<i>2011-12</i>	558	<b>268</b>	1,131	<b>565</b>	102	<b>56</b>
<i>2012-13</i>	582	<b>294</b>	1,031	<b>599</b>	115	<b>77</b>
<i>2013-14</i>	655	<b>289</b>	1,055	<b>561</b>	91	<b>41</b>
<i>2014-15</i>	564	<b>266</b>	1027	<b>504</b>	107	<b>48</b>
<b>OTHER</b>						
<i>2010-11</i>	2,617	<b>1,134</b>	1,601	<b>311</b>	1,029	<b>418</b>
<i>2011-12</i>	1,971	<b>1,517</b>	1,538	<b>284</b>	903	<b>347</b>
<i>2012-13</i>	1,887	<b>1,471</b>	717	<b>169</b>	549	<b>237</b>
<i>2013-14</i>	1,570	<b>1,239</b>	625	<b>146</b>	621	<b>262</b>
<i>2014-15</i>	1,870	<b>849</b>	562	<b>141</b>	473	<b>211</b>
<b>ALL</b>						
<i>2010-11</i>	4,678	<b>2,832</b>	4,160	<b>2,247</b>	1,193	<b>518</b>
<i>2011-12</i>	4,170	<b>3,424</b>	4,341	<b>2,349</b>	1,080	<b>454</b>
<i>2012-13</i>	4,034	<b>3,141</b>	3,342	<b>2,118</b>	700	<b>334</b>
<i>2013-14</i>	3,648	<b>2,752</b>	3,429	<b>2,242</b>	937	<b>355</b>
<i>2014-15</i>	3,856	<b>2,459</b>	3,315	<b>2,284</b>	838	<b>327</b>

Figures in *italics* include OU data.

**TABLE D: STAFF**

	<b>Full-time</b>				<b>Part-time</b>				<b>Other</b>	
	permanent		temporary		permanent		temporary		no.	FTE
	no.	FTE	no.	FTE	no.	FTE	no.	FTE		
<i>2005-6</i>	345	<b>342</b>	38	<b>39</b>	40	<b>19</b>	53	<b>15</b>	150	<b>56</b>
<i>2006-7</i>	370	<b>367</b>	34	<b>35</b>	38	<b>18</b>	73	<b>18</b>	115	<b>48</b>
<i>2007-8</i>	394	<b>390</b>	33	<b>34</b>	30	<b>14</b>	72	<b>27</b>	124	<b>36</b>
<i>2008-9</i>	401	<b>398</b>	33	<b>34</b>	29	<b>16</b>	87	<b>32</b>	125	<b>31</b>
<i>2009-10</i>	369	<b>369</b>	45	<b>45</b>	26	<b>12</b>	92	<b>39</b>	155	<b>33</b>
<i>2010-11</i>	380	<b>377</b>	36	<b>24</b>	26	<b>12</b>	106	<b>44</b>	161	<b>44</b>
<i>2011-12</i>	399	<b>389</b>	40	<b>38</b>	28	<b>13</b>	71	<b>24</b>	135	<b>55</b>
<i>2012-13</i>	392	<b>389</b>	41	<b>39</b>	22	<b>11</b>	80	<b>20</b>	114	<b>50</b>
<i>2013-14</i>	395	<b>388</b>	41	<b>40</b>	22	<b>10</b>	56	<b>17</b>	68	<b>60</b>
<i>2014-15</i>	397	<b>386</b>	49	<b>47</b>	30	<b>14</b>	64	<b>23</b>	172	<b>82</b>

**Summary (all staff)**

	no.	FTE	% <i>change</i>	on leave (FTE)	effective FTE	% <i>change</i>
<i>2010-11</i>	691	<b>501</b>	0.6	67	<b>434</b>	5.3
<i>2011-12</i>	665	<b>519</b>	3.6	85	<b>434</b>	0
<i>2012-13</i>	650	<b>509</b>	-1.9	67	<b>442</b>	1.8
<i>2013-14</i>	656	<b>515</b>	1.2	47	<b>468</b>	5.9
<i>2014-15</i>	795	<b>552</b>	7.2	76	<b>476</b>	1.7

**TABLE E: BEGINNERS'  
LANGUAGES**

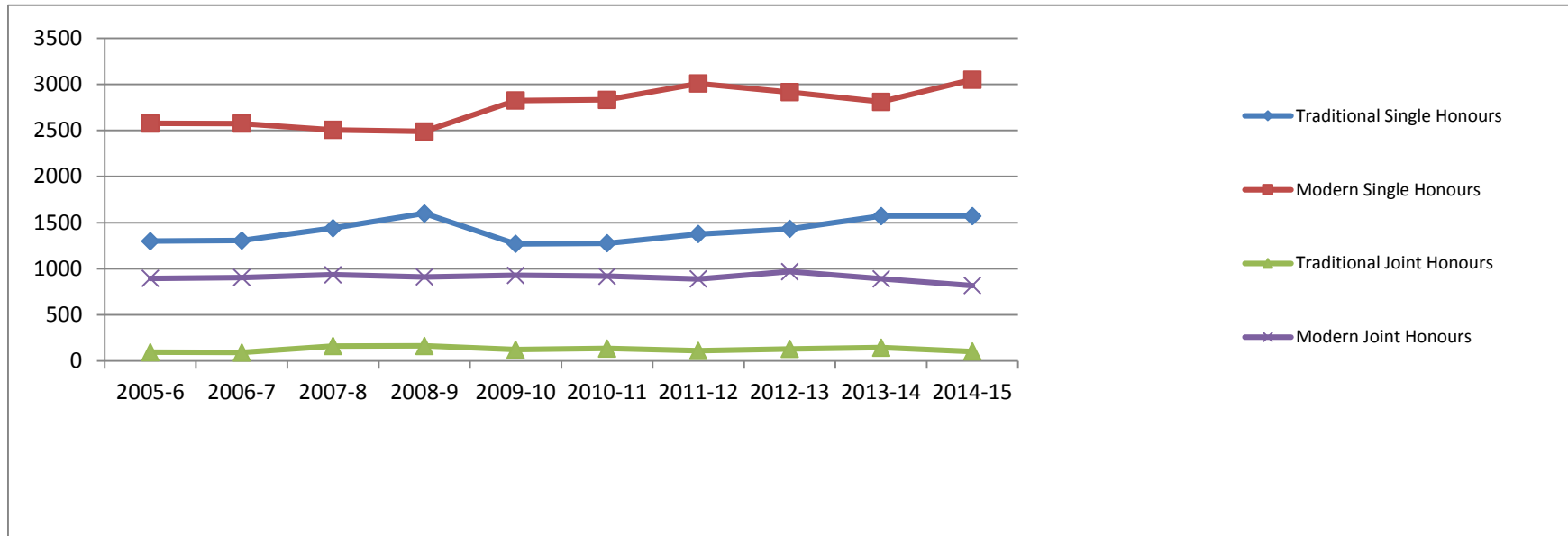
	<b>Greek</b>			<b>Latin</b>		
	no.	<b>FTE</b>	<i>% change</i>	no.	<b>FTE</b>	<i>% change</i>
<b>Undergraduates</b>						
<i>2010-11</i>	850	<b>267</b>	<i>-7.3</i>	1,387	<b>454</b>	<i>32.0</i>
<i>2011-12</i>	736	<b>228</b>	<i>-14.6</i>	1,170	<b>397</b>	<i>-12.6</i>
<i>2012-13</i>	800	<b>446</b>	<i>95.6</i>	1,100	<b>468</b>	<i>17.8</i>
<i>2013-14</i>	723	<b>303</b>	<i>-32.1</i>	1,020	<b>398</b>	<i>-14.9</i>
<i>2014-15</i>	729	<b>298</b>	<i>-1.65</i>	768	<b>224</b>	<i>-43.7</i>
<b>Postgraduates</b>						
<i>2010-11</i>	87	<b>19</b>	<i>-15.6</i>	168	<b>64</b>	<i>137.0</i>
<i>2011-12</i>	119	<b>32</b>	<i>68.4</i>	123	<b>43</b>	<i>-32.8</i>
<i>2012-13</i>	93	<b>41</b>	<i>28.1</i>	165	<b>79</b>	<i>83.7</i>
<i>2013-14</i>	114	<b>22</b>	<i>-46.3</i>	149	<b>29</b>	<i>-63.3</i>
<i>2014-15</i>	124	<b>37</b>	<i>68.1</i>	162	<b>39</b>	<i>34.5</i>

**TABLE F: POSTGRADUATES**

	Full-time	Part-time	Other (FTE = 0)	Total no.	FTE	% change
<b>TAUGHT</b>						
<i>2010-11</i>	405	207	5	612	<b>469</b>	-4.7
<i>2011-12</i>	452	184	3	739	<b>518</b>	10.4
<i>2012-13</i>	328	189	1	519	<b>432</b>	-16.6
<i>2013-14</i>	405	227	6	633	<b>484</b>	12.0
<i>2014-15</i>	399	226	10	635	<b>475</b>	-1.9
<b>RESEARCH</b>						
<i>2010-11</i>	444	116	10	560	<b>504</b>	10.8
<i>2011-12</i>	455	128	0	583	<b>520</b>	3.2
<i>2012-13</i>	507	139	20	666	<b>575</b>	10.6
<i>2013-14</i>	552	143	17	695	<b>599</b>	4.2
<i>2014-15</i>	566	164	25	755	<b>625</b>	4.3

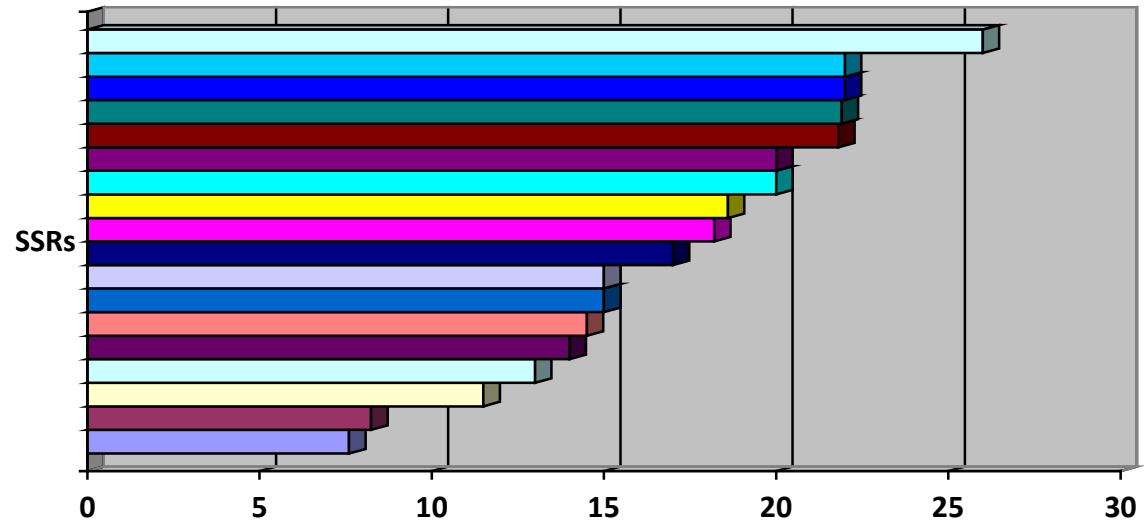


FTE Student Numbers in the UK  
'Traditional' vs. 'Modern' Classics, Single and Joint Honours  
10-year-view (2005-15)



### Staff-Student-Ratios 2014-15\*

The average SSR is 1:17. The highest SSR is 1:26; the lowest SSR is 1:7.6.



\*figures included in this graph are from the following 18 departments: Bristol, Cambridge, Cardiff, Durham, Edinburgh, Glasgow, Kent, Lampeter, Liverpool, Manchester, Newcastle, Nottingham, Oxford, Reading, Roehampton, St. Andrews, UCL, Warwick.